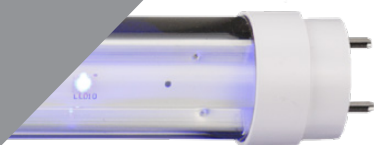


INSECT  
CONTROL  
UNIT

## X-TRAP 50 LED

WALL or CEILING  
MOUNTING SYSTEM.



With its discreet design, the X-trap 50 LED is recommended for use in shops and restaurants and dry industrial environments.

# Energy saving & effective control go hand in hand



## X-trap 50 LED wall mounting system.

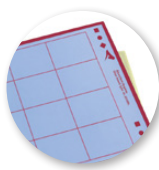
With its discreet design, the X-trap 50 LED is recommended for use in shops and restaurants and dry industrial environments.

*Easy to service, stylish and effective; the X-trap 50 LED offers it all.*



### LED lamps

LED technology offers clear advantages in terms of efficiency (lower energy consumption) and its footprint (compactness)



### Glue boards

Insects are caught on a glue layer, which preserves them over time. The caught insects can be counted and insect species can be analysed, which offers clear advantages in an IPM approach.

### Reasons to start using the X-trap 50 LED:

- Robust metal housing
- Energy saving UV-A LED technology offers over 90 kW of savings per unit per year.
- 3 year lifespan (25.000 hrs) of the UV-A LED lamps
- Environmental friendly: no restricted chemicals used in the product design.
- RoHS / REACH / ISO and CB compliant
- Fast and simple maintenance of the unit.
- The glue rail system in the unit can hold differently sized glue boards.
- High quality casing offers over 5 years of operational use
- Fast mounting and fast service

*Guarantee on LED lamps: 2 years on electrical failures*

## Technical specifications

|                        |                                                           |
|------------------------|-----------------------------------------------------------|
| Area coverage          | : 50 - 80 m <sup>2</sup>                                  |
| Light source           | : 2x 15 Watt UV-A LED lamps                               |
| Type of UV lamps       | : UV LED Lamps RoHS certified                             |
| Electrical supply      | : 100-240V ~ 50-60 Hz                                     |
| Catch specifications   | : By means of long life glue board                        |
| Power consumption      | : 22 W                                                    |
| Weight                 | : 4,5 Kg                                                  |
| Degree of protection   | : IP 20 (drip proof)                                      |
| Guarantee              | : 2 year return to base                                   |
| Int. building norm     | : acc. IEC-335-259 int. standard for insect exterminators |
| Lamp life time         | : 25.000 hrs (*)                                          |
| Dimensions (L x D x H) | : 538 x 103 x 311 mm                                      |
| CE-approval            | : Yes                                                     |
| Mounting position      | : Wall mounted                                            |
| Cable                  | : Included                                                |
| Packaging              | : Export box included                                     |
| Manual                 | : Enclosed with the unit in English                       |
| Service                | : Unit can be dismantled without special tools            |

*(\*) after 25.000 hours a loss of 30% in efficiency has to be expected and lamps need to be replaced*

